

L-force Drives

Montageanleitung

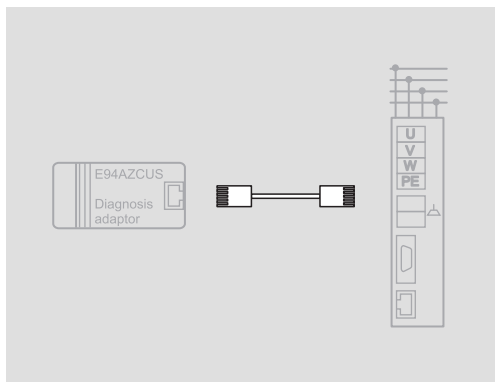
Mounting Instructions

Instructions de montage

Instrucciones para el montaje

Istruzioni per il montaggio

EWL



EYWL0070, EWL0071, EWL0072

Systemleitung für USB Diagnoseadapter

System cable for USB diagnostic adapter

Câble système pour adaptateur de diagnostic USB

Cable de sistema para adaptador de diagnóstico USB

Cavo di sistema per adattatore per diagnostica USB



Lesen Sie die Dokumentation zum Grundgerät und zum Diagnoseadapter, bevor Sie mit den Arbeiten beginnen.



Please read the documentation for the basic device and the diagnosis adapter before you start working.



Veillez lire attentivement la documentation de l' appareil de base et du connecteur de diagnostic avant toute opération !

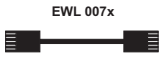
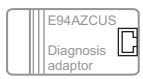
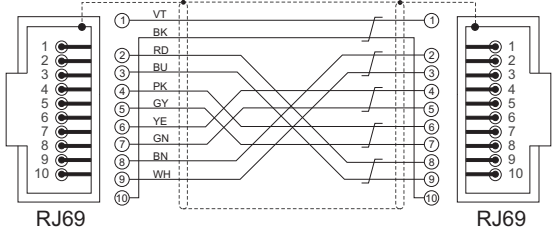


Lea la documentación del equipo básico y del adaptador de diagnóstico antes de empezar a trabajar.



Prima di iniziare a lavorare, leggere la documentazione relativa all'apparecchio base e al modulo di diagnostica.

0070	2.5 m
0071	5.0 m
0072	10.0 m



ewl7_2



© 04/2010



Lenze Automation GmbH
Hans-Lenze-Str. 1
D-31855 Aerzen
Germany



+49 (0)51 54 / 82-0



+49 (0)51 54 / 82 - 28 00



Lenze@Lenze.de



www.Lenze.com

Service Lenze Service GmbH
Breslauer Straße 3
D-32699 Extertal
Germany



00 80 00 / 24 4 68 77 (24 h helpline)



+49 (0)51 54 / 82-11 12



Service@Lenze.de

EDKWL007x ■ 13337297 ■ DE/EN/FR/ES/IT ■ 2.0 ■ TD00

10 9 8 7 6 5 4 3 2 1